

N.E. 1/4

1-2

SECTION 1, T.7N., R.1E., S.L.B. & M.

IN WEBER COUNTY

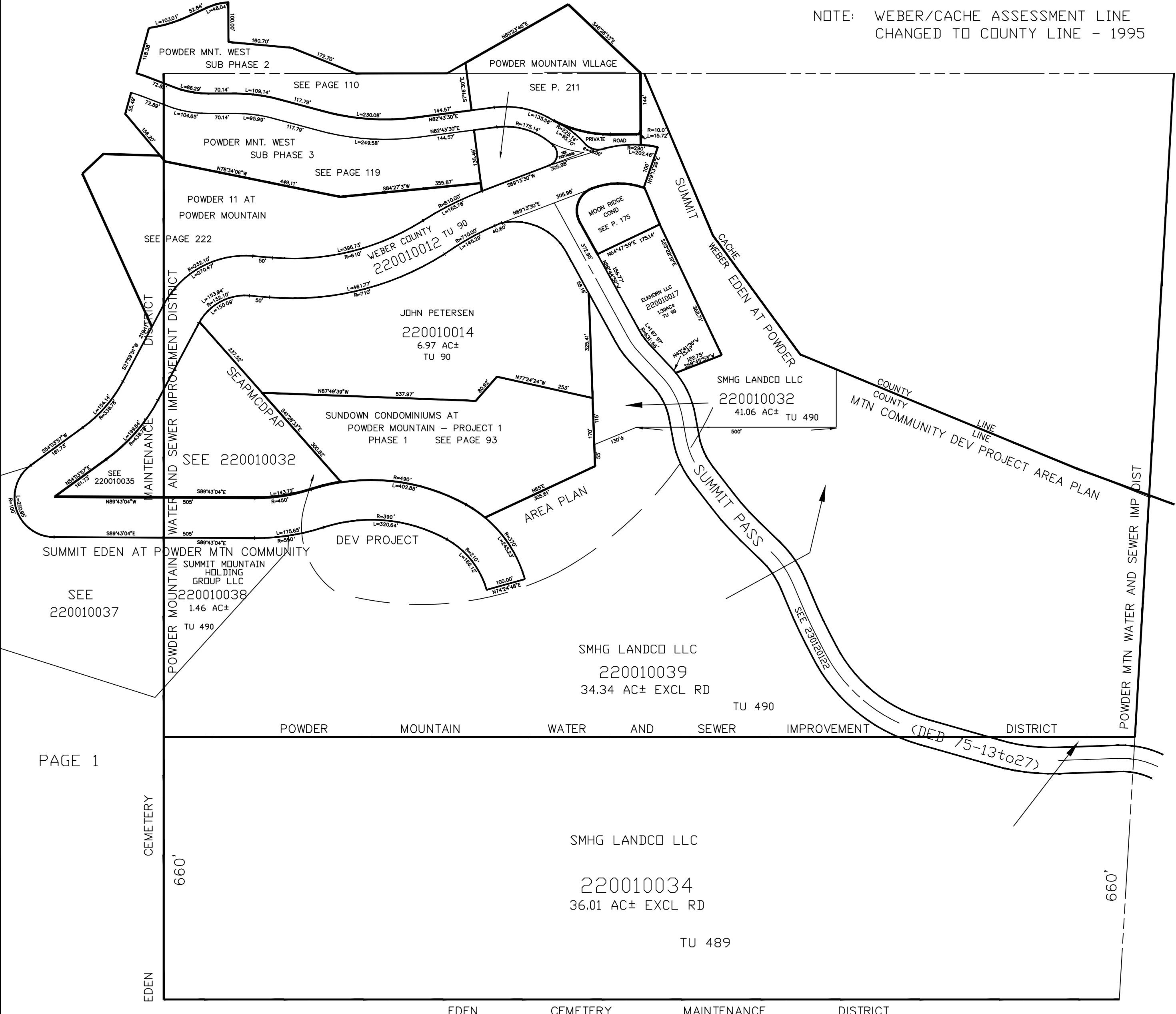
SCALE 1" = 200'

TAXING UNIT: 58,90.489,490

POWDER MNT. WEST
SUB PHASE 1
SEE BK. 23 P. 85,86

SEE BOOK 23 PAGE 44-2

NOTE: WEBER/CACHE ASSESSMENT LINE
CHANGED TO COUNTY LINE - 1995



SEE BOOK 23 PAGE 12

PAGE 1

SEE PAGE 1-1